

**HYDRAULIC PROPERTIES**

SECTION	Q	A	V	r	n	s	b	d
Earth No 3	160	90.60	177	2.93	0.225	0.0017	10	4.68

**NOTE**  
For General Notes see 526-D-2190

4-10-63	CHANGED STA ON DRAINAGE SIPHON FROM 397+96 BK TO 397+95 I BK
2-1-63	DELETED 7,500 CUBIC YARDS DISPOSAL AREA
10-5-57	ADDED DISPOSAL AREA AND CHANGED ROW
8-2-62	DELETED LINING AND UNDERDRAIN
6-25-62	ADDED UNDERDRAIN

DATA TRACED FROM FIELD DWG 526-412-5124

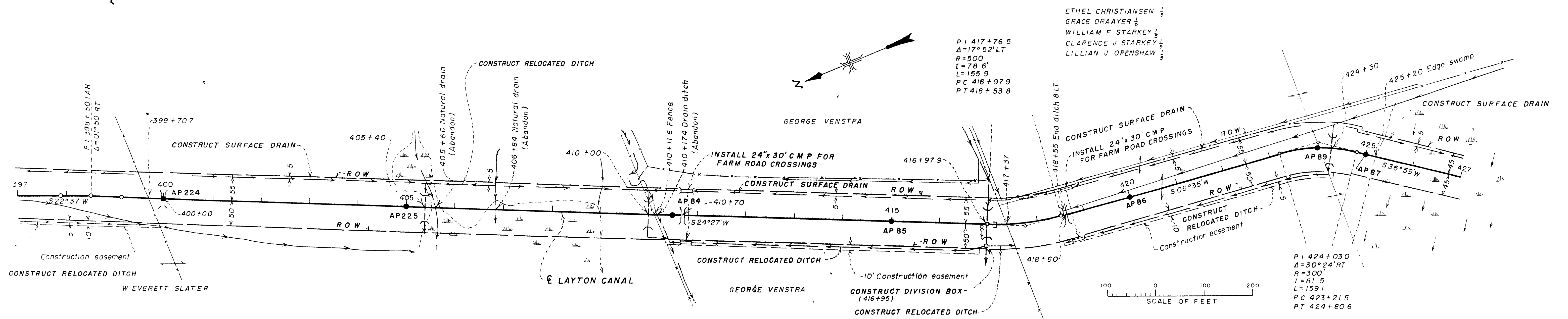
UNITED STATES  
DEPARTMENT OF THE INTERIOR  
BUREAU OF RECLAMATION  
WEBER BASIN PROJECT-UTAH

**LAYTON CANAL**  
STA 376+00 TO STA 397+00AH  
PLAN AND PROFILE

DRAWN D.W.B. SUBMITTED *F. Pritchard*  
TRACED R.B. RECOMMENDED *W. H. ...*  
CHECKED *M.C.* APPROVED *J.P. ...*

DENVER, COLORADO AUG 29 1961  
SHEET 10 OF 17 526-D-2199

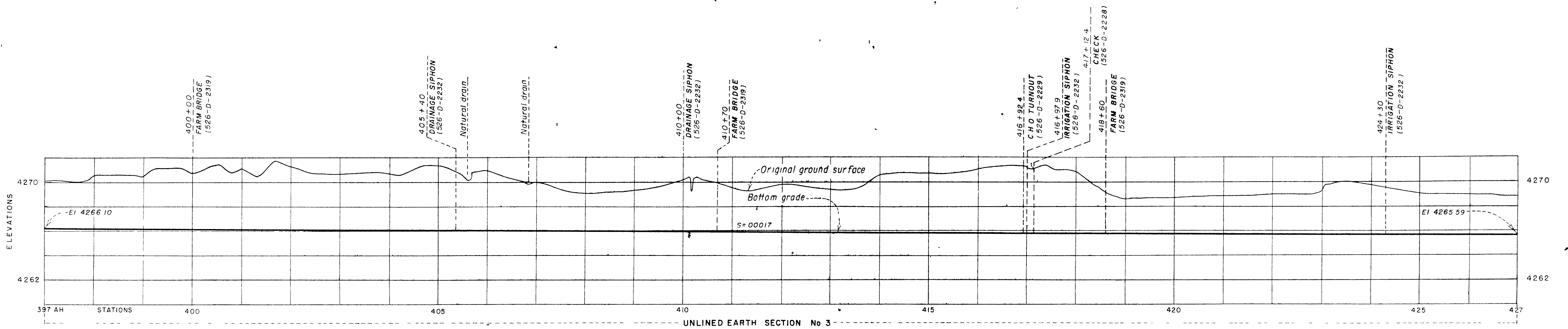
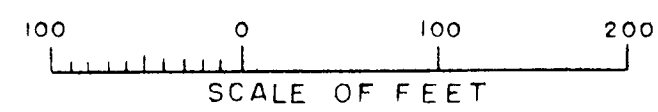
ALWAYS THINK SAFETY



ETHEL CHRISTIANSEN  
 GRACE DRAAYER  
 WILLIAM F STARKEY  
 CLARENCE J STARKEY  
 LILLIAN J OPENSHAW

P 1 417 + 76.5  
 $\Delta = 17^\circ 52' LT$   
 $R = 500$   
 $L = 78.6'$   
 $L = 155.9$   
 PC 416 + 97.9  
 PT 418 + 53.8

P 1 424 + 03.0  
 $\Delta = 30^\circ 24' RT$   
 $R = 300'$   
 $T = 81.5$   
 $L = 159.1$   
 PC 423 + 21.5  
 PT 424 + 80.6



HYDRAULIC PROPERTIES

SECTION	Q	A	V	r	n	s	b	d
Earth No 3	160	90.60	1.77	2.93	0.0225	0.0017	10	4.68

NOTE  
 For General Notes see 526-D-2190

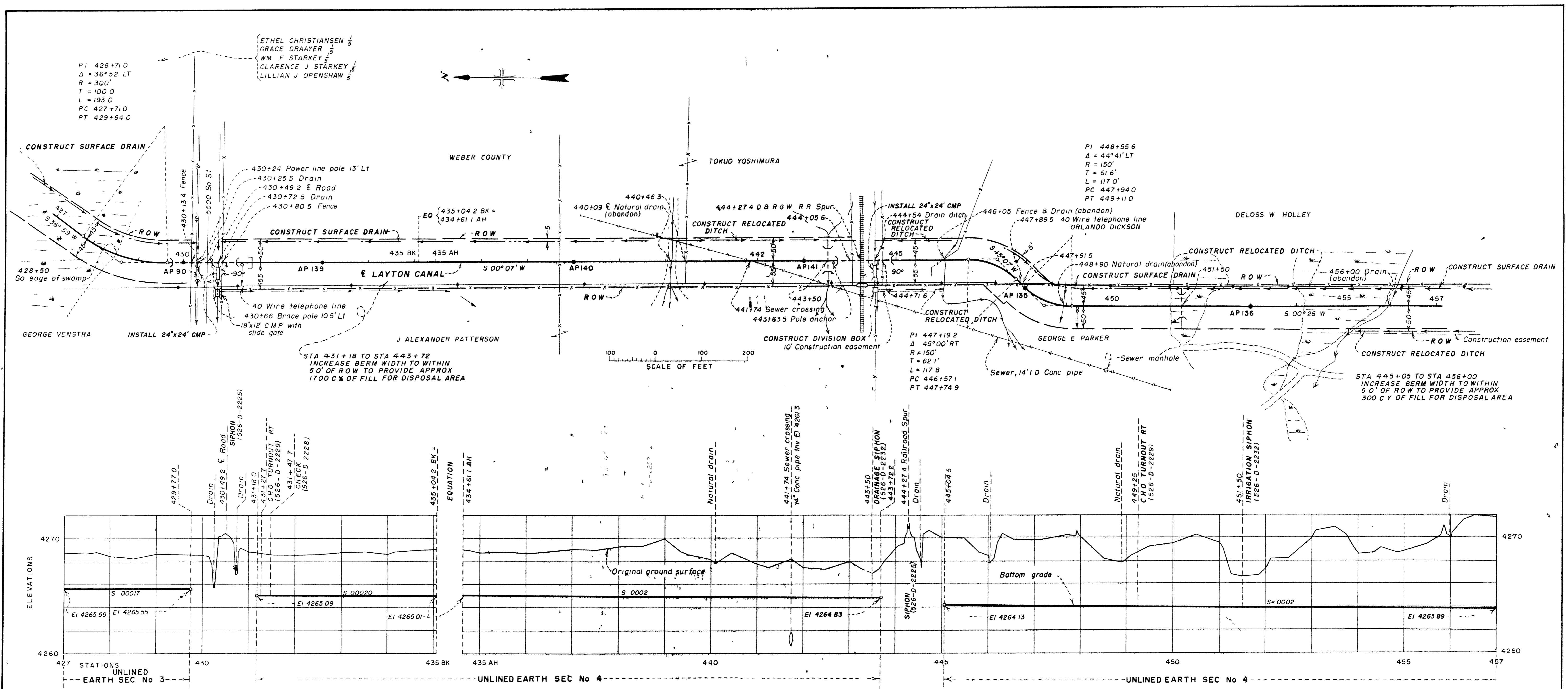
B-2-62	DELETED LINING AND UNDERDRAIN
E-25-62	ADDED UNDERDRAIN
D-2-7-62	REVISED C.M.P. SIZES

DATA TRACED FROM FIELD DWG. 526-412-5125

UNITED STATES  
 DEPARTMENT OF THE INTERIOR  
 BUREAU OF RECLAMATION  
 WEBER BASIN PROJECT-UTAH  
**LAYTON CANAL**  
 STA 397+00 AH TO STA 427+00  
 PLAN AND PROFILE

DRAWN A.G.W. R.S.H. SUBMITTED	F. Ritchey
TRACED M.M.G.	RECOMMENDED
CHECKED M.D.	APPROVED
DENVER, COLORADO, AUGUST 22, 1961	CHIEF CANAL ENGINEER
SHEET 11 OF 17	526-D-2200

ALWAYS THINK SAFETY



**HYDRAULIC PROPERTIES**

SECTION	Q	A	V	r	n	s	b	d
Earth No 3	160	9060	177	2.93	0.025	0.0017	10	4.68
Earth No 4	150	8162	184	2.77	0.025	0.0020	10	4.36

**NOTE**  
For General Notes see 526-D 2190

2-18-64	MOVED CHO TURNOUT AND CHECK AT STATIONS 437+60 AND 437+80
10-5-62	ADDED DISPOSAL NOTE AND CHANGED ROW
8-2-62	DELETED LINING AND UNDERDRAIN
2-25-62	ADDED UNDERDRAIN

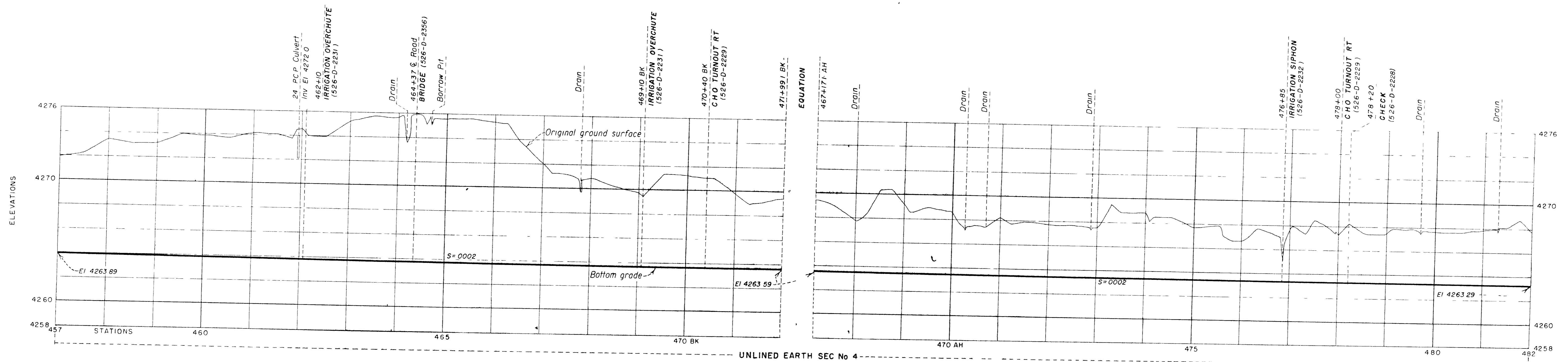
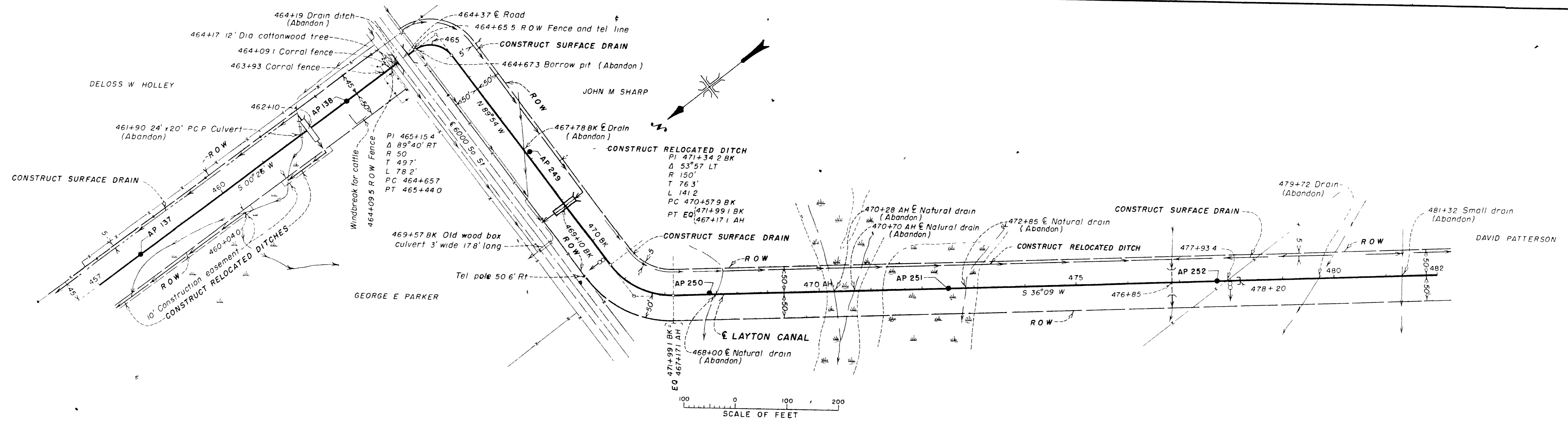
DATA TRACED FROM FIELD DWG 526-412-5126

UNITED STATES  
DEPARTMENT OF THE INTERIOR  
BUREAU OF RECLAMATION  
WEBER BASIN PROJECT-UTAH  
**LAYTON CANAL**  
STA 427+00 TO STA 457+00  
PLAN AND PROFILE

DRAWN: J.G.W. SUBMITTED: F. R. R. [Signature]  
TRACED: S.R.W. RECOMMENDED: [Signature]  
CHECKED: [Signature] APPROVED: [Signature]  
DENVER, COLORADO, AUG 29, 1961  
SHEET 12 OF 17

526-D-2201

ALWAYS THINK SAFETY



UNLINED EARTH SEC No 4

**HYDRAULIC PROPERTIES**

SECTION	Q	A	V	r	n	s	b	d
Earth No 4	150	81.62	1.84	2.77	0.225	0.002	10	4.36

**NOTE**  
For General Notes see 526-D-2190

ALWAYS THINK SAFETY

10-5-62 D. J. R.	CHANGED R.O.W. AND SURFACE DRAIN
8-2-62 D. J. R.	DELETED LINING AND UNDERDRAIN

DATA TRACED FROM FIELD DWG 526-412-5127

UNITED STATES  
DEPARTMENT OF THE INTERIOR  
BUREAU OF RECLAMATION  
WEBER BASIN PROJECT-UTAH

**LAYTON CANAL**  
STA 457+00 TO STA 482+00  
**PLAN AND PROFILE**

DRAWN AOW	SUBMITTED 7/1/62
TRACED TRM	RECOMMENDED NEW/White
CHECKED M. J. R.	APPROVED P. E. Patterson

DENVER COLORADO AUGUST 28 1962  
SHEET 13 OF 17

**526-D-2202**